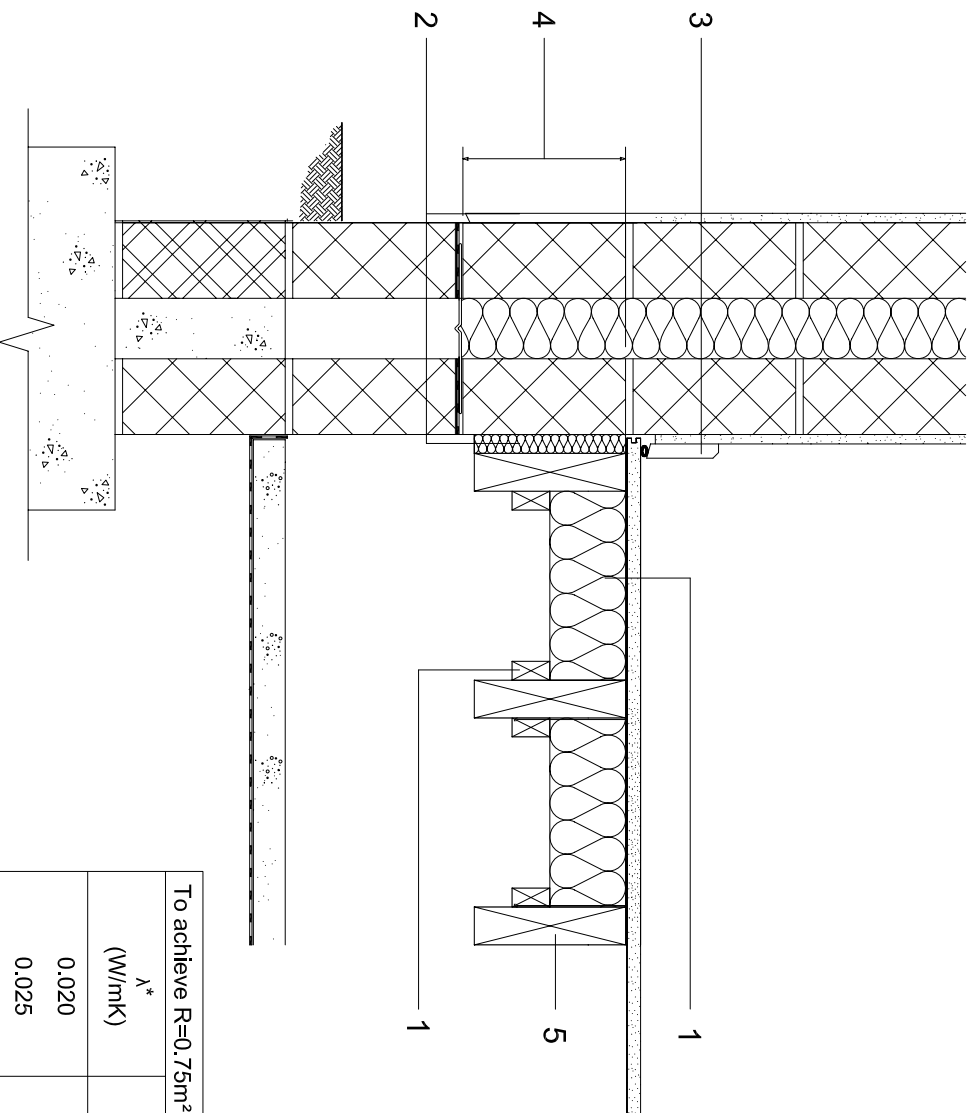


**Notes**

1. Insulation should be placed directly under timber flooring avoiding any air gaps and supported either on battens (rigid insulation).
2. Fix strip of insulation with minimum R-value of 0.75m<sup>2</sup>/KW between wall and last joist - see table.
3. To limit air careful attention should be given to sealing around perimeter of floor by applying expanding foam tape under skirting and continuous bead of sealant to back of skirting prior to fixing.
4. Wall insulation must continue a minimum of 150mm below top of floor insulation and be supported on a row of ties.
5. Timber joists should be supported using joist hangers.
6. Ventilated sub-floor (vents not shown).



To achieve R=0.75m <sup>2</sup> /KW (note 2)	
$\lambda^*$ (W/mK)	Thickness (mm)
0.020	15
0.025	19
0.030	23
0.035	26
0.040	30

**Detail F**

**Timber suspended ground floor.**

Scale 1:10

Joist and joist hangers should be supported in line with BRE Good Building Guide 21 'Joist hangers'.

\* Thermal conductivity