

*Notes*

1. Proprietary closer with minimum thermal resistance path of 0.45m<sup>2</sup>/K/ (manufacturer's certified data).

2. Minimum frame/closer overlap:

Exposure zones Sheltered -

Severe\* - 30mm.

Exposure zones Very

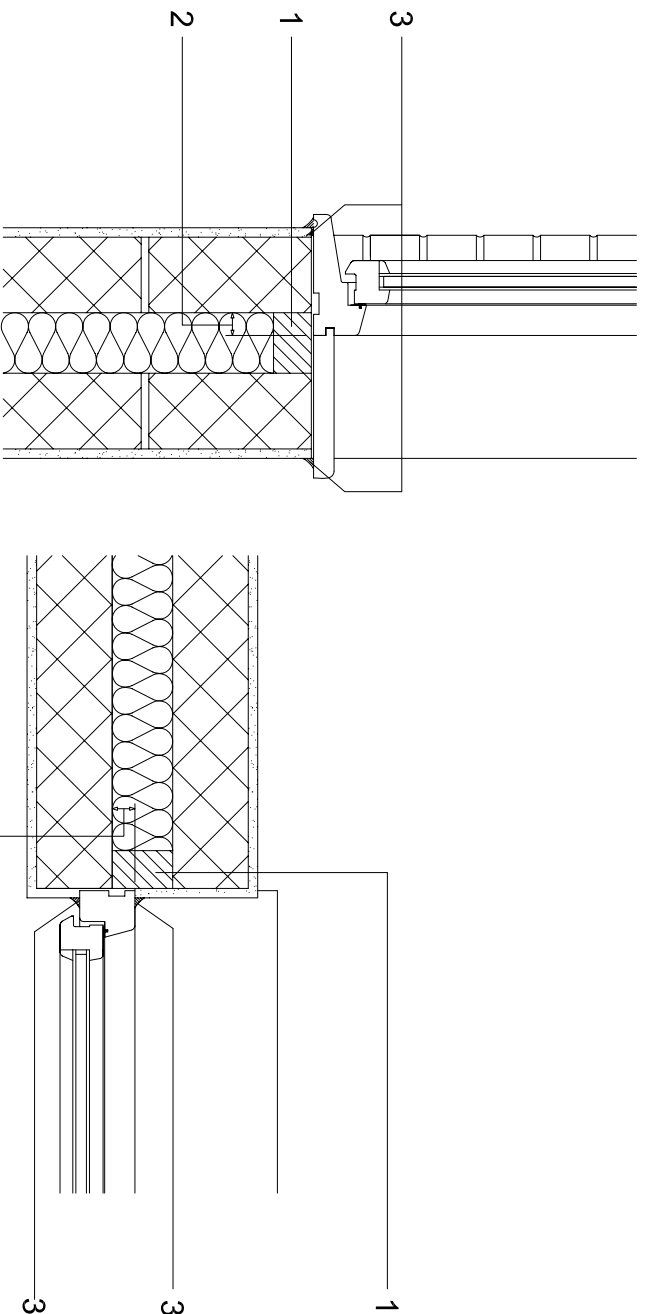
Severe\* - Fully rebated (check reveals). Render or other impervious cladding should be used.

3. Sealant to front and back of frame/sills.

The use of closers, minimum overlaps and sealants also apply to junctions between external walls and bay windows/conservatories.

For level threshold details see section 8 "General Arrangements".

\* As given in BR262 'Thermal Insulation: Avoiding Risks', NHBC Standards, and Zurich Building Guarantees Technical Manual.



**Detail D**

**Windows and doors. Jambs and sills.**

**Scale 1:10**