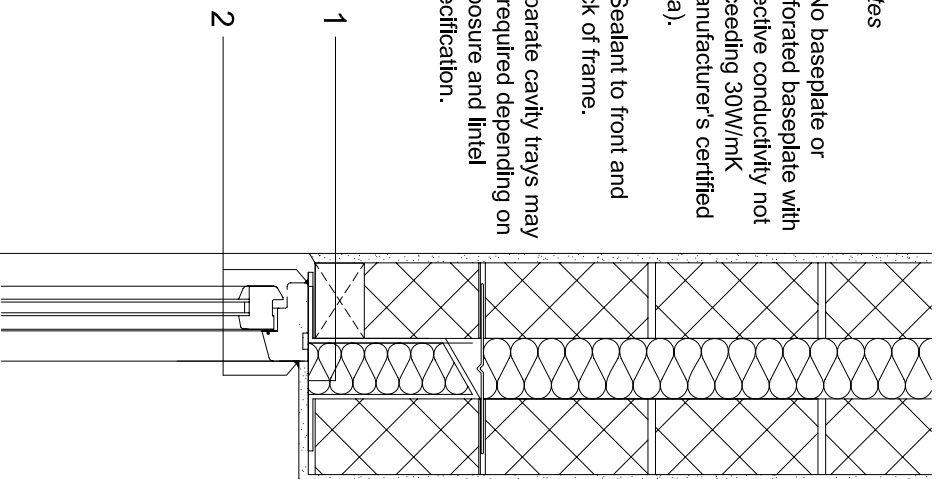


Notes

1. No baseplate or perforated baseplate with effective conductivity not exceeding 30W/mK (manufacturer's certified data).

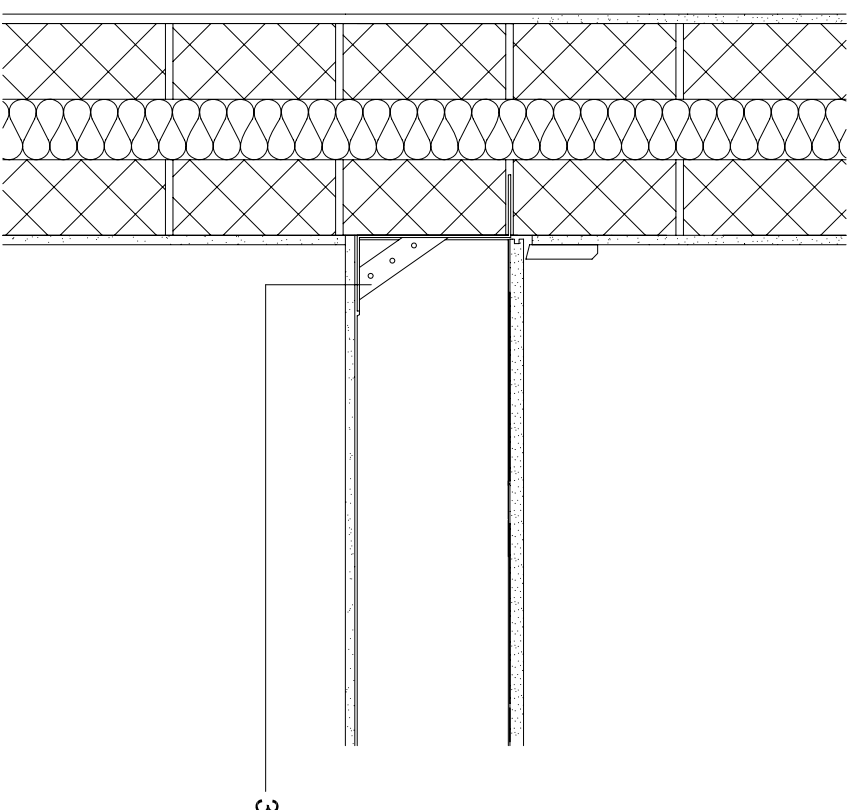
2. Sealant to front and back of frame.

Separate cavity trays may be required depending on exposure and lintel specification.



Detail C
Windows and doors. Folded lintel.

Scale 1:10



Notes

3. Timber joists should be supported using joist hangers.

Joist and joist hangers should be supported in line with BRE Good Building Guide 21 'Joist hangers'.

Separating/compartment floors require additional layers/components to meet acoustic and fire safety requirements.

Balconies may be built so long as the wall insulation layer is not broken. The balcony/supports may be tied back through the insulation so long as any penetrations are sealed.

Detail E
Timber intermediate floor.

Scale 1:10